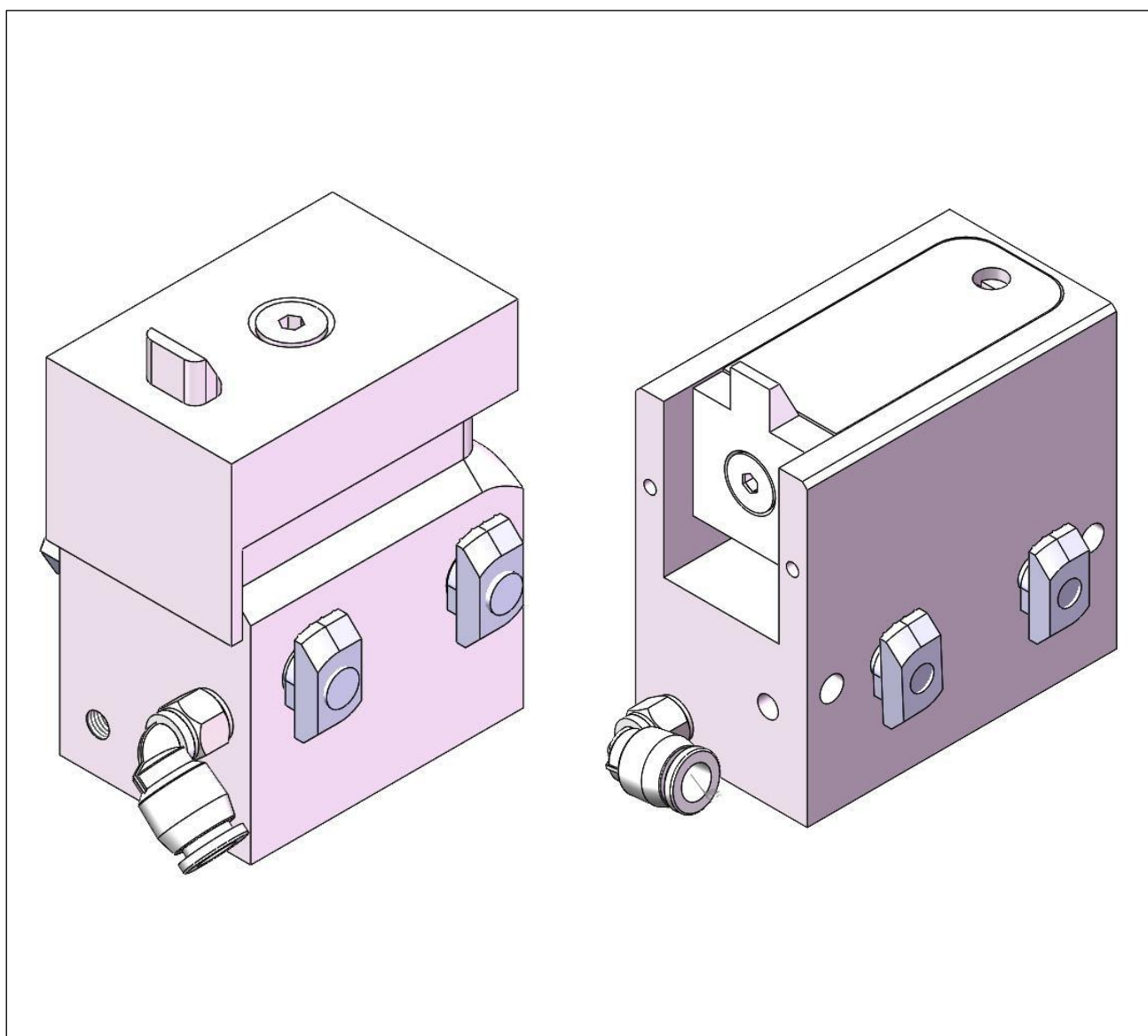


SG1 Stopper

Instruction & Maintenance Manual

SG1 阻挡器安装使用维护手册

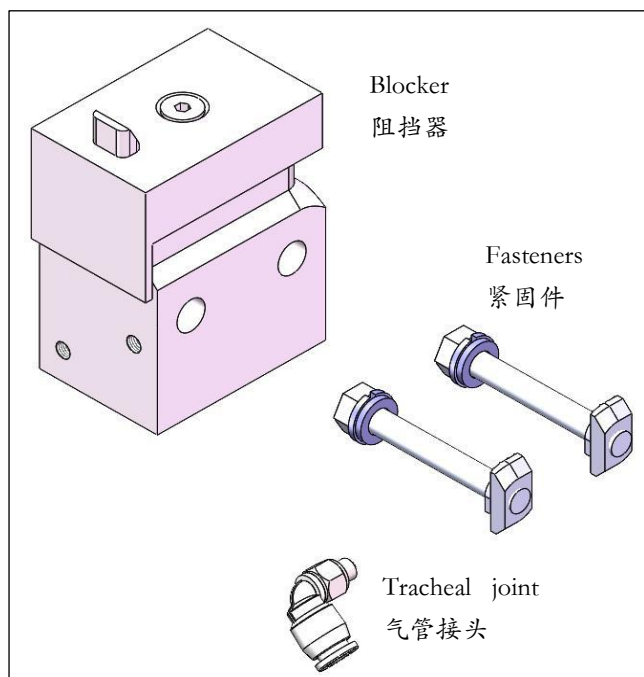


Suzhou LinkedGo Transfer System Co.,Ltd.

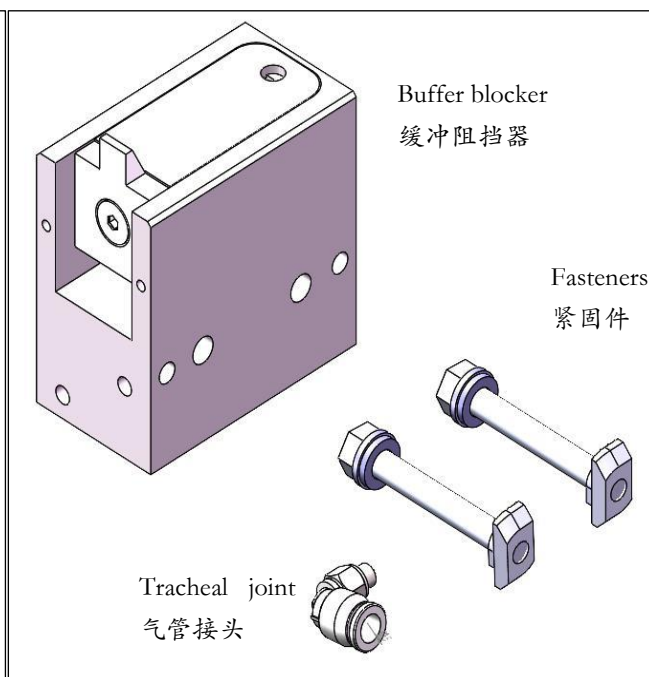
苏州领科工业技术有限公司

Structure Diagram 结构示意图

SG1-70-07-EW



SG1/D-18-07-EW

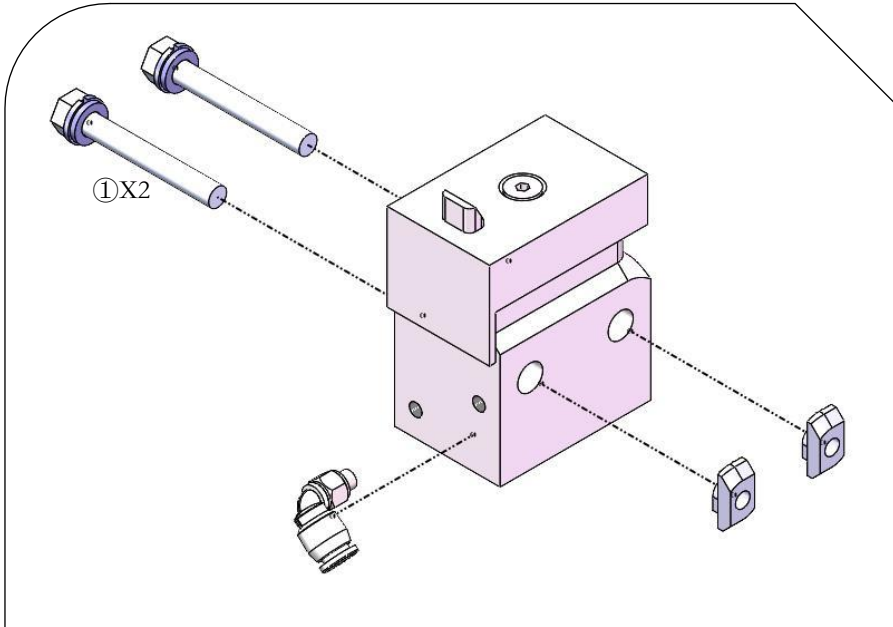


1. The SG1-70-07-EW type is a hard stop, which stops one or more stacked workpiece trays at the designated position.
- 1、SG1-70-07-EW 型为硬挡，将一个或多个堆积的工件托盘挡停在指定的位置上。
2. The SG1/D-18-07-EW type is a buffer stopper, which can achieve smooth buffering stop and release of the tray to the predetermined position on the conveying system, avoiding rigid collision of the tray.
- 2、SG1/D-18-07-EW 型为缓冲阻挡器，可以实现输送系统上托盘平稳缓冲停止和放行到预定位置，避免托盘受到刚性碰撞。
3. The tracheal interface of both types of blockers is 6mm.
- 3、两种阻挡器的气管接口都是 6mm。
4. The working pressure of the two types of blockers is 4-8 bar of compressed air.
- 4、两种阻挡器的工作压力为 4-8bar 压缩空气。
5. The descent stroke of the stopper is 7mm.
- 5、阻挡器的下降行程为 7mm。
6. The buffering stroke of the buffer stopper is 7mm.
- 6、缓冲阻挡器的缓冲行程为 7mm。
7. The damping of the buffer stopper can be infinitely adjusted.
- 7、缓冲阻挡器的阻尼可无级调节。

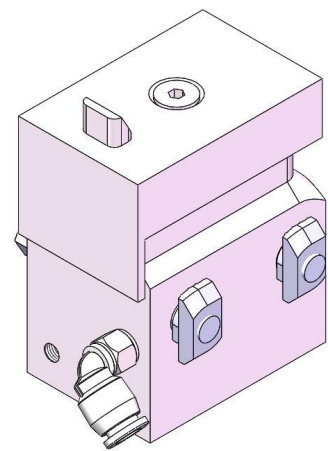
安装步骤 Installation steps

A Assemble the stopper SG1-70-07-EW type.

A 组装阻挡器 SG1-70-07-EW 型。

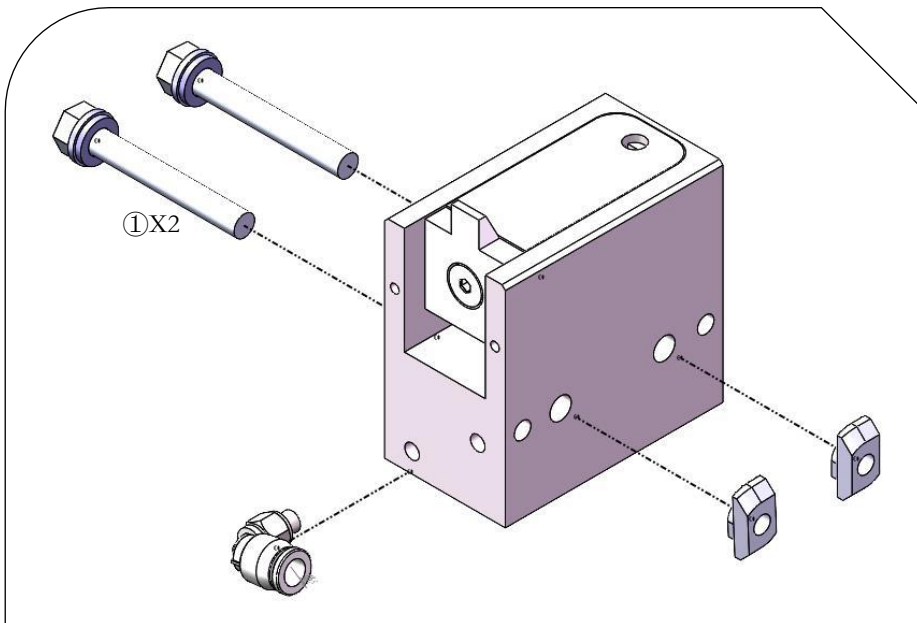


① — M6x45
 Sw13 13Nm

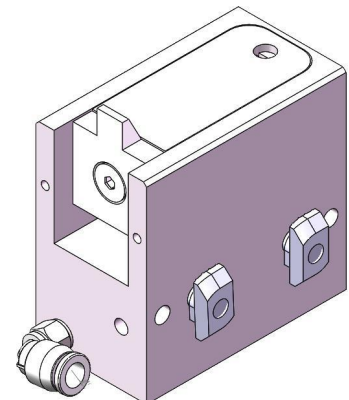


B Assemble the buffer stopper SG1/D-18-07-EW type.

B 组装缓冲阻挡器 SG1/D-18-07-EW 型。



① — M6x45
 Sw13 13Nm



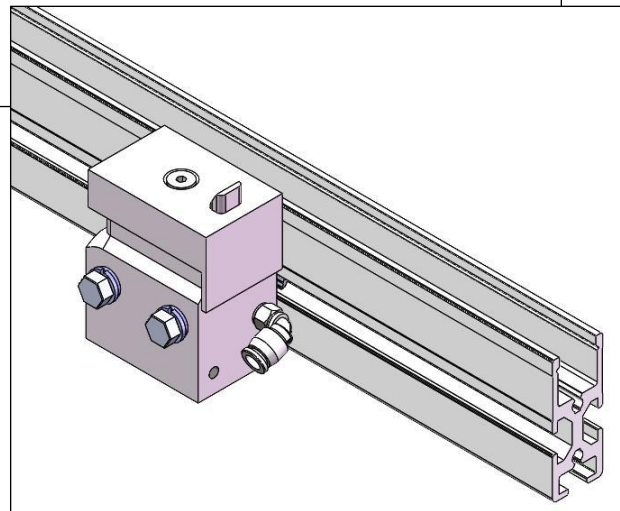
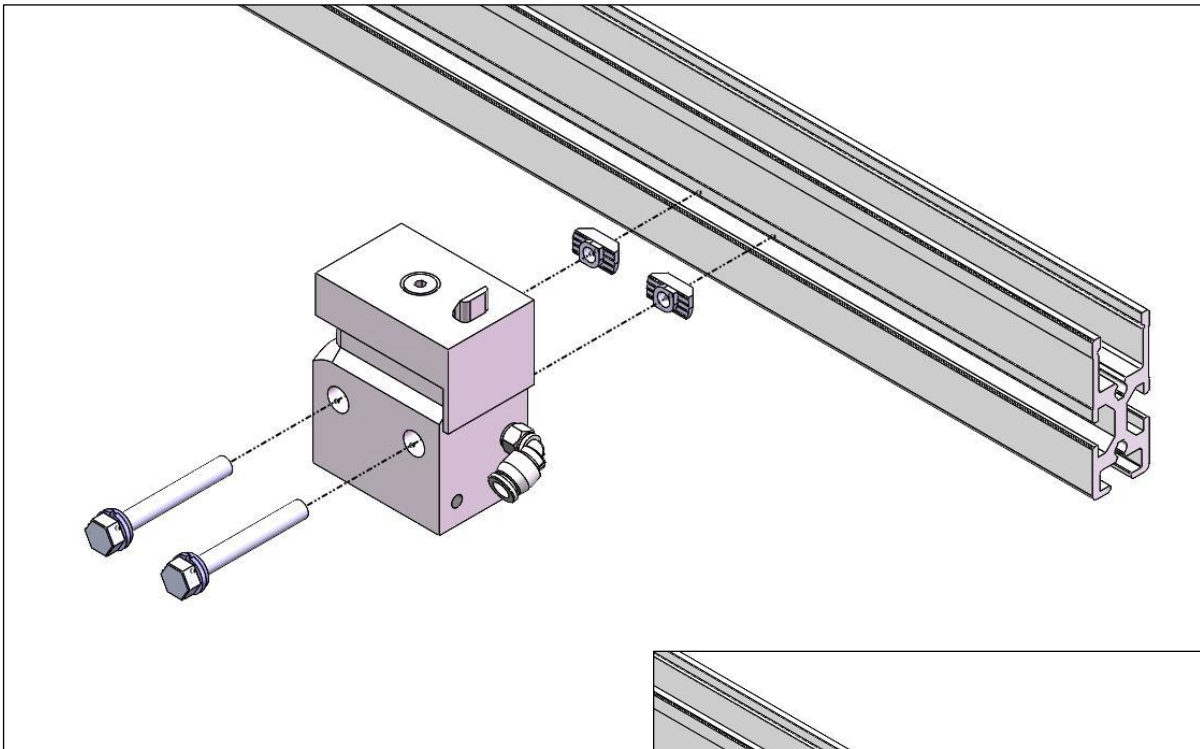
产品特征

安装步骤

维护保养

C Install to the wire body.

C 安装至线体。



产品特征

安装步骤

维护保养

Disclaimer

免责声明

The customer shall inspect the equipment regularly. If the customer fails to maintain the conveyor as the state above, leading to any malfunction or damage to the conveyor, our company will not be responsible for it, all related costs (including material costs, installation and commissioning fees, and hotel expense) shall be borne by the customer.

客户应定期对设备进行检查。若客户未按要求对输送机进行维护，进而导致输送机发生任何故障或损坏，我司将不承担相关责任，由此产生的相关费用（材料费，安装调试费，差旅费）均由客户承担。

Suzhou LinkedGo Transfer System Co.,Ltd.
苏州领科工业技术有限公司

[Tel: +86-512-6636 1885](tel:+86-512-66361885)

Add: Room 706, Building D, Dongchuang Science and Technology Park,
No. 216 Jinfeng Road, Wuzhong District, Suzhou, P.R. China

Zip code:215101

E-mail: Sales@LinkedGo.com.cn

Website: [www. LinkedGo.com.cn](http://www.LinkedList.com.cn)

Subject to technical modifications

电话: +86-512-6636 1885

地址: 苏州市吴中区木渎镇金枫路 216 号东创科技园 D 幢 706 室

邮编: 215101

邮箱: Sales@LinkedGo.com.cn

网址: www.LinkedList.com.cn

我司保留技术更改的权利